



SHOCK-RESISTANT

aneroid sphygmomanometer

# Welch Allyn



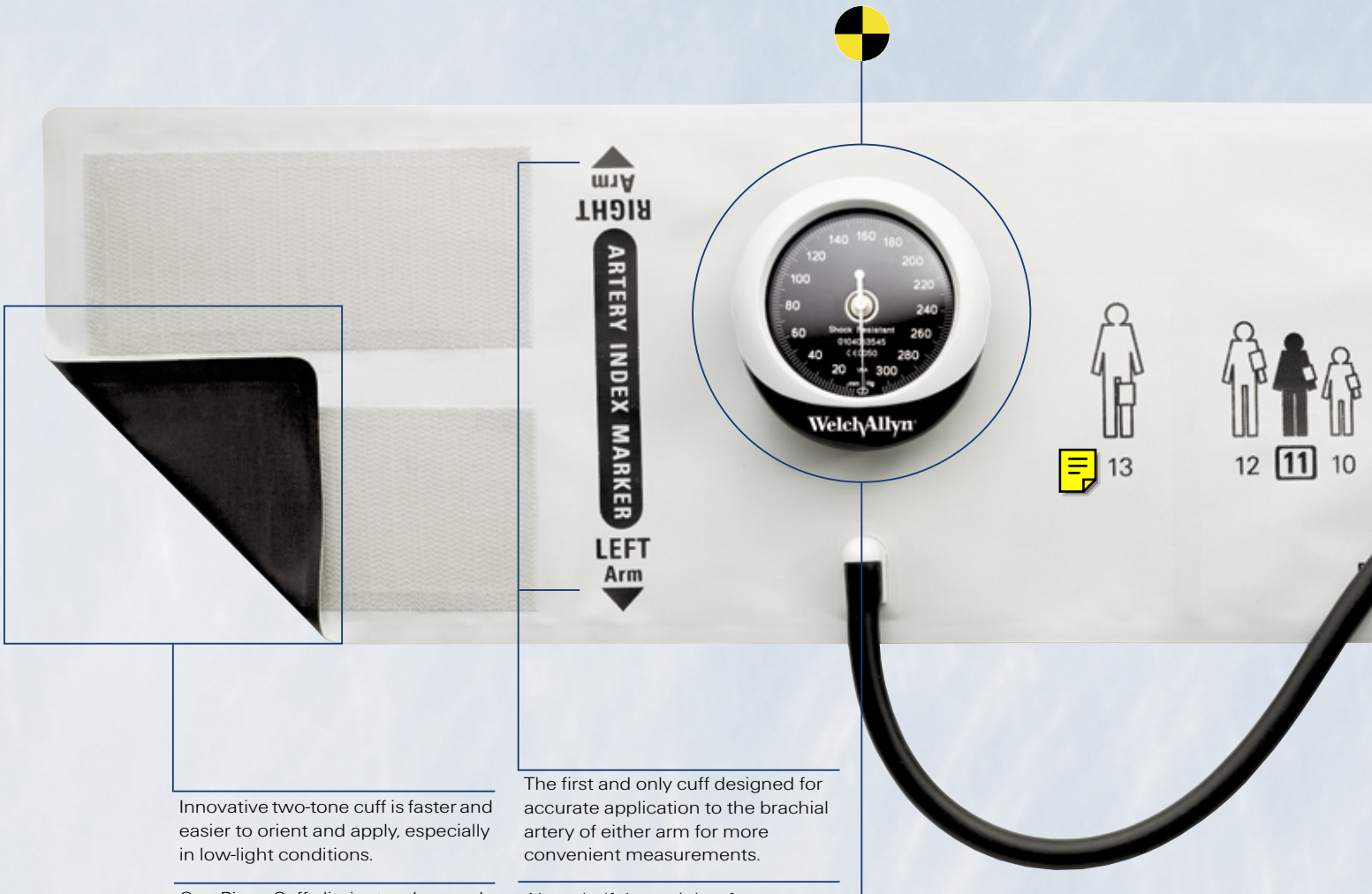
DURASHOCK



from mercury, to aneroid, to gear-free

**DURASHOCK.**

Welch Allyn's legacy in the design and manufacture of blood pressure instruments is rooted in the first Tycos® brand aneroid developed in 1907 and continues today with the Welch Allyn DuraShock Sphygmomanometer – the first and only gear-free, shock-resistant aneroid. It delivers unprecedented durability with prolonged accuracy, making it yet another example of Welch Allyn's commitment to innovative solutions for cost-effective healthcare.



Innovative two-tone cuff is faster and easier to orient and apply, especially in low-light conditions.

One-Piece Cuff eliminates the need to remove or replace bladders and is more durable than traditional cuffs.

Latex-free cuff is easy to clean, disinfect, or sterilize.

The only gauge that snaps directly into the cuff for fast, easy cuff changes.

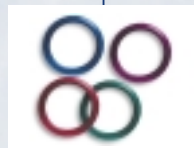
The first and only cuff designed for accurate application to the brachial artery of either arm for more convenient measurements.

About half the weight of a traditional sphygmomanometer, it will not weigh down your lab coat.

Revolutionary gauge and cuff design allows for an extremely low profile and more convenient readings, handling, and storage.

The first and only aneroid sphygmomanometer made without gears, it meets or exceeds AAMI SP9 specifications for shock resistance, and maintains its performance characteristics after a 30-inch drop onto a hard surface.

Optional color bumper variety pack (*available for Model DS44 only*) allows you to change among four bumpers in red, green, navy, and purple.



the first major innovation in aneroid technology in **100 YEARS**

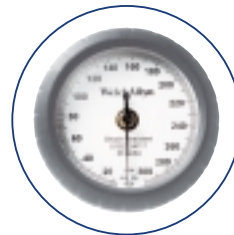


Aneroid sphygmomanometers have been based upon similar designs for more than 100 years – until now. Introducing Welch Allyn DuraShock: the only completely gear-free aneroid sphygmomanometer. By creating a gear-free design, we've created a gauge that is shock resistant, lighter, and much thinner than traditional gauges.

Until now, a dropped sphygmomanometer required recalibration or replacement. Not so for the DuraShock; it can fall 30 inches onto a hard surface and still remain accurate.



<b>MODEL</b>	DS45
<b>DIAL FACE</b>	laser engraved
<b>BUMPER</b>	permanent premium
<b>BULB</b>	*large, black
<b>VALVE</b>	Tycos® long life
<b>CUFF</b>	durable, two-tone
<b>CASE</b>	nylon ( <i>optional</i> )
<b>WARRANTY</b>	10 years



<b>MODEL</b>	DS44
<b>DIAL FACE</b>	pre-printed
<b>BUMPER</b>	changeable one-piece
<b>BULB</b>	medium, gray
<b>VALVE</b>	standard
<b>CUFF</b>	durable, two-tone
<b>CASE</b>	vinyl ( <i>optional</i> )
<b>WARRANTY</b>	5 years

\* adult and larger sizes



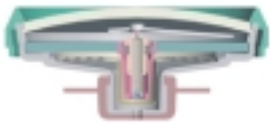
<b>CUFF SIZE</b>	child (9)	child (9)	small adult (10)	adult (11)	large adult (12)
<b>CUFF RANGE</b>	15.8 - 21.3 cm	15.8 - 21.3 cm	20.0 - 27.0 cm	25.3 - 34.3 cm	32.1 - 43.4 cm
<b>CUFF COLOR</b>	two-tone gray	color print	two-tone gray	two-tone gray	two-tone gray

#### COMPLETE SPHYGMOMANOMETER

<b>MODEL DS45</b>	DS45-09	DS45-09P	DS45-10	DS45-11	DS45-12
<b>MODEL DS45 WITH CASE</b>	DS45-09C	DS45-09PC	DS45-10C	DS45-11C	DS45-12C
<b>MODEL DS44</b>	DS44-09	DS44-09P	DS44-10	DS44-11	DS44-12
<b>MODEL DS44 WITH COLOR BUMPERS</b>	DS44-09V	DS44-09PV	DS44-10V	DS44-11V	DS44-12V
<b>MODEL DS44 WITH CASE</b>	DS44-09C	DS44-09PC	DS44-10C	DS44-11C	DS44-12C
<b>MODEL DS44 WITH COLOR BUMPERS AND CASE</b>	DS44-09CV	DS44-09PCV	DS44-10CV	DS44-11CV	DS44-12CV

#### ACCESSORY CUFFS AND INFLATION SYSTEMS

<b>INTEGRATED CUFF FOR MODEL DS45</b>	DS45-DUR09	DS45-DUR09P	DS45-DUR10	DS45-DUR11	DS45-DUR12
<b>INTEGRATED INFLATION SYSTEM FOR MODEL DS45</b>	DS45-DUR09F	DS45-DUR09PF	DS45-DUR10F	DS45-DUR11F	DS45-DUR12F
<b>INTEGRATED CUFF FOR MODEL DS44</b>	DS44-DUR09	DS44-DUR09P	DS44-DUR10	DS44-DUR11	DS44-DUR12
<b>INTEGRATED INFLATION SYSTEM FOR MODEL DS44</b>	DS44-DUR09F	DS44-DUR09PF	DS44-DUR10F	DS44-DUR11F	DS44-DUR12F



The Welch Allyn DuraShock integrated aneroid sphygmomanometer is accurate to  $\pm 3$  mm Hg and conforms to applicable sections of the following standards for aneroid sphygmomanometers:

American National Standard ANSI/AAMI SP9-1994, Non-automated sphygmomanometers

European Standard EN 1060-1: 1996, Non-invasive sphygmomanometers, Part 1: General Requirements

European Standard EN 1060-2: 1966, Part 2: Supplementary requirements for mechanical sphygmomanometers (excluding section 7.4.3 for pointer thickness)

INMETRO Technical Metrological Regulation Number 24 of February 26, 1996 (excluding Section 5.4 for pointer thickness)

This product will maintain the safety and performance characteristics specified at temperatures ranging from 0°C (32°F) to 46°C (115°F) at a relative humidity level not to exceed 85%.

#### OTHER ACCESSORIES

	MODEL DS45	DS44
<b>GAUGE ONLY</b>	DS45	DS44
<b>COLOR VARIETY PACK, FOUR BUMPERS (FOR DS44 ONLY)</b>	—	DS44-V
<b>PREMIUM BULB, LARGE (BLACK)</b>	5086-03	—
<b>PREMIUM BULB, MEDIUM (BLACK)</b>	5086-01	—
<b>STANDARD BULB, (GRAY)</b>	—	5086-08
<b>AIR RELEASE VALVE, PREMIUM</b>	5087-01	—
<b>AIR RELEASE VALVE, STANDARD</b>	—	5087-16
<b>PREMIUM STORAGE CASE, NYLON</b>	5085-07	—
<b>STANDARD STORAGE CASE, VINYL</b>	—	5085-09
<b>DURASHOCK CUFF-PORT LAUNDERING PLUG</b>	5082-250	5082-250
<b>DURASHOCK CALIBRATION CONNECTOR</b>	5082-255	5082-255
<b>UNIVERSAL TUBE PLUG ACCESSORY</b>	5082-163	5082-163

**WELCH ALLYN CANADA LTD.** TEL: 905 890 0004 FAX: 905 890 0008

**WELCH ALLYN U.K. LTD.** TEL: 44 1296 682140 FAX: 44 1296 682104

**WELCH ALLYN IRELAND LTD.** TEL: 353 46 67700 FAX: 353 46 27128

**WELCH ALLYN ITALY** TEL: 39 02 669 9291 FAX: 39 02 6671 3599

**WELCH ALLYN AUSTRALIA PTY. LTD.** TEL: 612 9638 3000 FAX: 612 9638 3500

**WELCH ALLYN HONG KONG** TEL: 852 2886 8980 FAX: 852 2886 8360

**WELCH ALLYN CHINA** TEL: 86 21 6327 9631 FAX: 86 21 6327 9632

**WELCH ALLYN JAPAN K.K.** TEL: 81 3 5212 7391 FAX: 81 3 3261 7372

**WELCH ALLYN LTD. SINGAPORE** TEL: 65 291 0882 FAX: 65 291 5780

**WELCH ALLYN LTD. THAILAND** TEL: 662 4400280 FAX: 662 4400084

**WELCH ALLYN GERMANY** TEL: 49 7477 9271 0 FAX: 49 7477 9271 90

**WELCH ALLYN FRANCE** TEL: 01 60 09 33 66 FAX: 01 60 09 67 97